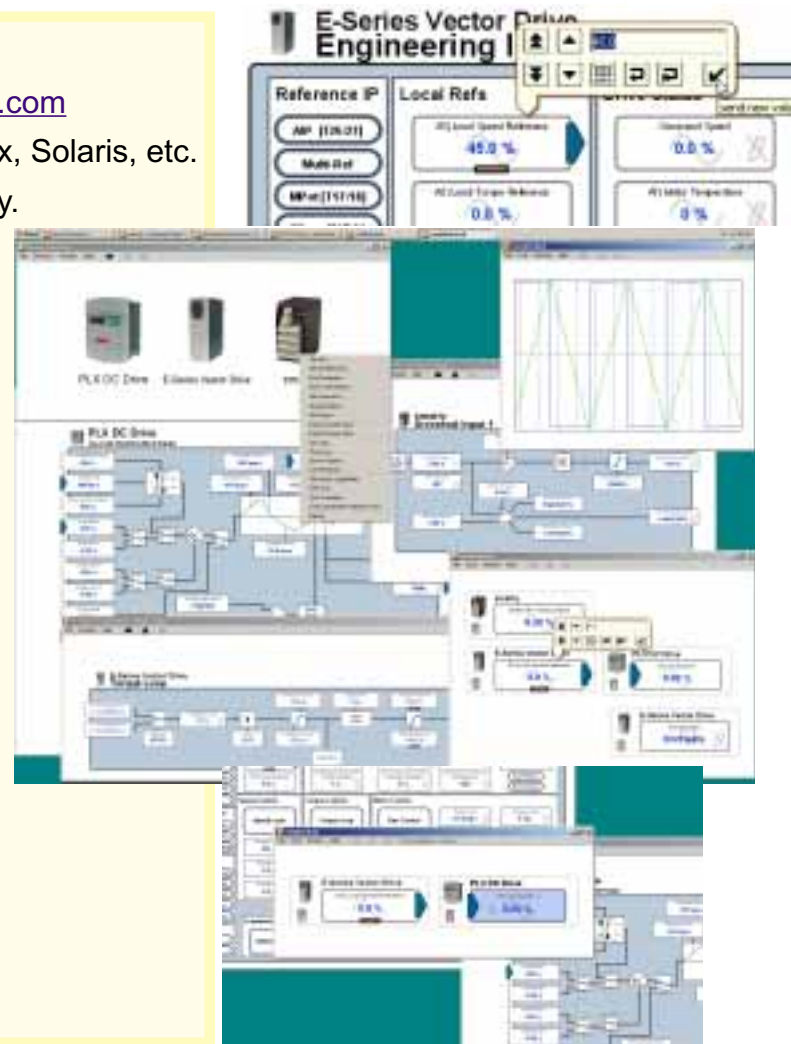


**drive.web** is an entirely new Internet accessible distributed control technology optimized for high performance AC and DC drive systems. After extensive testing in applications as diverse as printing presses, coating lines, slitter rewinders, dairies, non-woven fabric lines and pre-preg lines **drive.web** has proved to offer unequalled performance and complete reliability.

**drive.web** products include **smarty** process controllers and **speedy** drive interface controllers which are configured and integrated into systems using the intuitive **savvy** system design tools which can be downloaded free from [www.driveweb.com](http://www.driveweb.com).

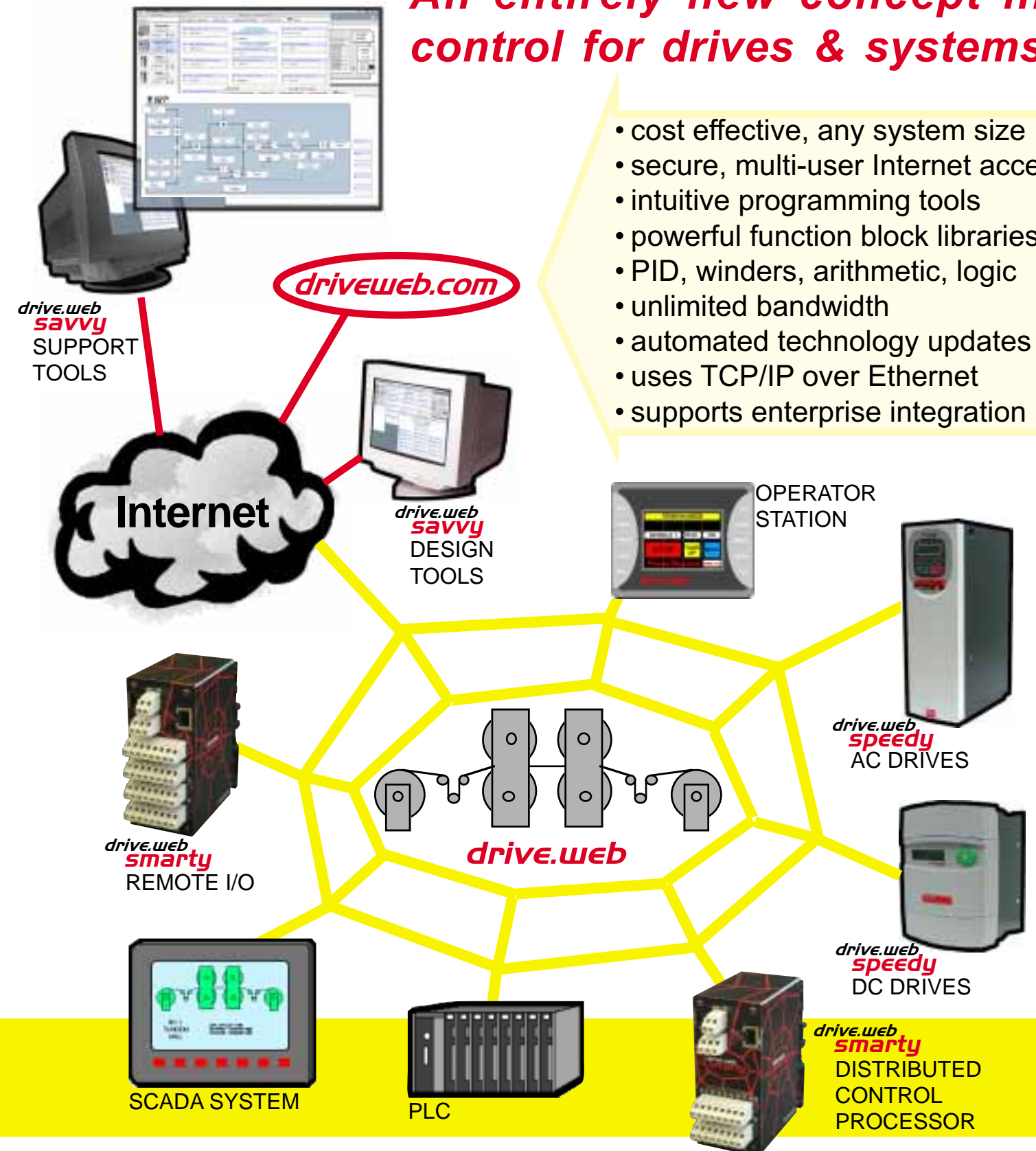
### savvy facts

- Automated version updates from [www.driveweb.com](http://www.driveweb.com)
- Platform independent; Windows, MacOSX, Linux, Solaris, etc.
- Graphical function blocks and connection display.
- Dynamic graphics show function state change
- Fast, easy navigation with browse, drill down, step up, pan, zoom, home and jump features.
- "hover text" shows object reference info
- Pop-up "tool tips", button function reminders
- "Phantom" devices for off line design
- Pop-up "parameter setter" with revert to previous and default value buttons
- Fast screen updates for realtime value display
- "Dock" windows for easy parameter organization and system documentation.
- Trend display with adjustable timebase
- Fast, system wide "get info" feature
- Easy "drag 'n drop" connections
- Multi-level password protection
- Built-in rules checker stops invalid connections
- Full manual built-in with search and index



## An entirely new concept in control for drives & systems

- cost effective, any system size
- secure, multi-user Internet access
- intuitive programming tools
- powerful function block libraries
- PID, winders, arithmetic, logic
- unlimited bandwidth
- automated technology updates
- uses TCP/IP over Ethernet
- supports enterprise integration



# drive.web smarty process controller

**smarty** is a small DIN rail mounting, programmable controller that can be used either as a stand alone unit in retrofit applications or as a high performance distributed process controller in networked systems.

**smarty** is a cost effective alternative to a PLC in drive systems. For drive process functions **smarty** will outperform an equivalent PLC, it is typically much smaller and it is much easier to program, document and monitor.

## smarty facts

**smarty** has a built in Ethernet port for networking and programming and is available with options including:

- 7 analog/digital universal inputs, up to +/-200VDC
- 2 analog outputs, 0-10VDC
- 3 digital input/outputs, 24VDC
- 2 inputs for bidirectional encoders with marker
- RS485 or RS232 port with ModbusRTU.
- Serial interface to Bardac Optidrives and other drives
- ModbusTCP/IP over Ethernet.
- Realtime clock

**smarty** standard features:

- RJ45, 10baseT, Ethernet port
- Plug in terminals
- Small, 4.5" high, 2" wide, 4.75" deep (115x52x120mm)
- DIN rail mount
- Rugged metal enclosure
- savvy** intuitive configuration and monitoring tools

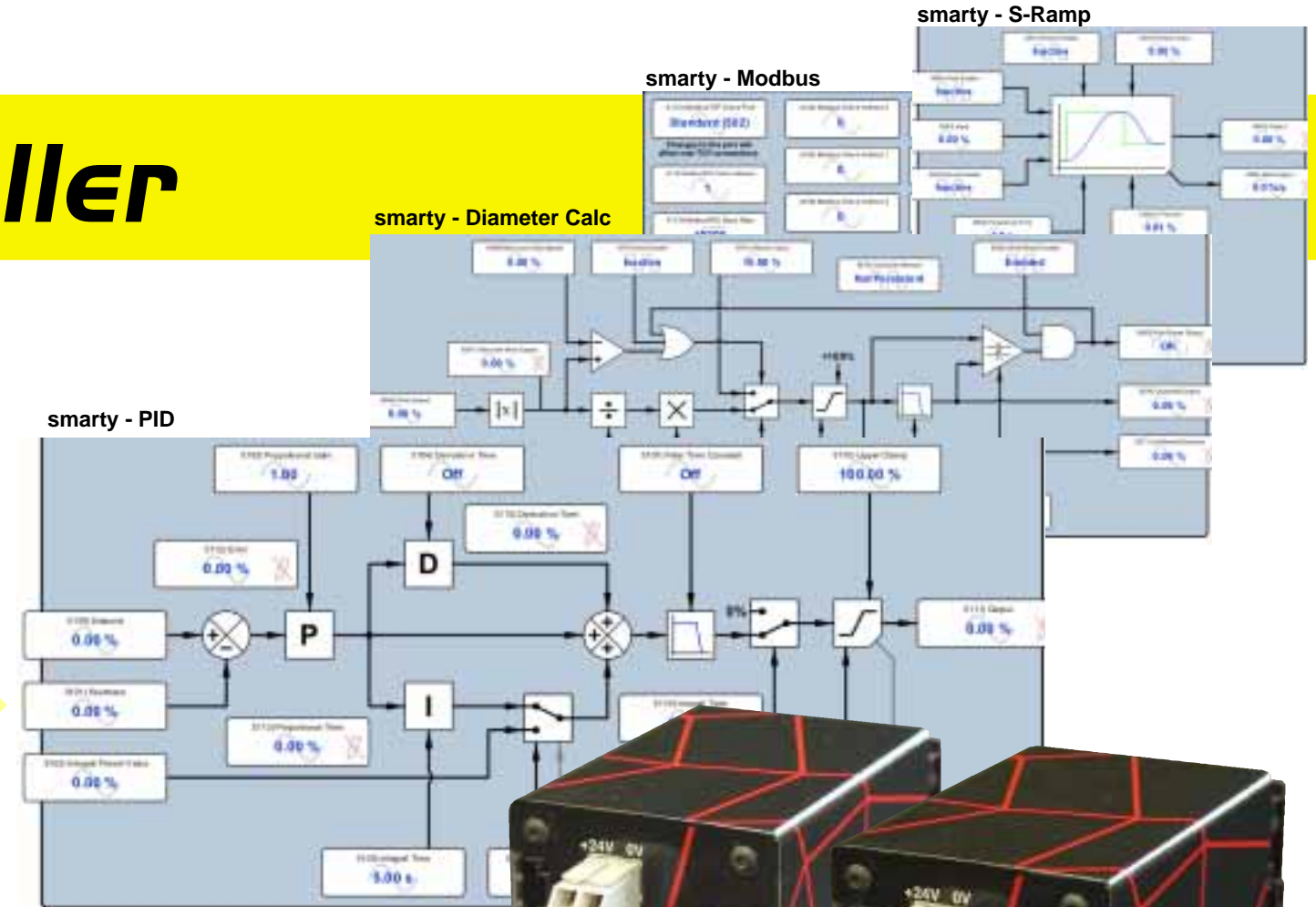
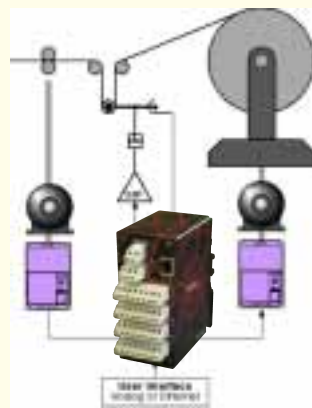
**smarty** warranty, 3 years from date of manufacture.

**smarty** function blocks  
Extensive libraries of both primitive and complex graphical function blocks enable easy, intuitive system design ...

- Arithmetic, logic, switches
- Timers, filters, clamps
- Linear ramps, S-ramps
- PID with adaptable gains
- Comparators, latches
- Profilers, skip, MOP, logger
- Winders (open & closed loop)
- Diameter calculator
- Taper tension
- Torque compensator

## smarty specials

are pre-configured units for specific applications such as open loop and closed loop winders, master/slave drive sections and customized functions.



**smarty** can be used either in networked systems or as a stand alone processor.

It's a great retrofit option for old unreliable winder control racks, analog PIDs, relay logic, timers, etc., and is more versatile, easier to program and much cheaper than using a PLC.

As a remote i/o device it is intelligent, cost effective and can easily interface to other devices via ModbusTCP/IP.

**smarty** control schemes which are easily connected to drives, PLCs, operator stations, etc., are configured from graphical function block libraries using the **drive.web savvy** system design tools (free with automated updates from [www.driveweb.com](http://www.driveweb.com))

**smart process and logic controller for drives and systems - versatile, intuitive, expandable, low cost**