

drive.web *smarty specials*

WINDERS & UNWINDERS

smarty programmable controllers use the *drive.web* distributed control technology to bring easy, cost effective intelligence to high performance drive systems.

smarty specials are pre-configured generic packages for common applications:

smarty dw210-1101

smarty dw210-1102

smarty dw210-1103

smarty dw210-1104

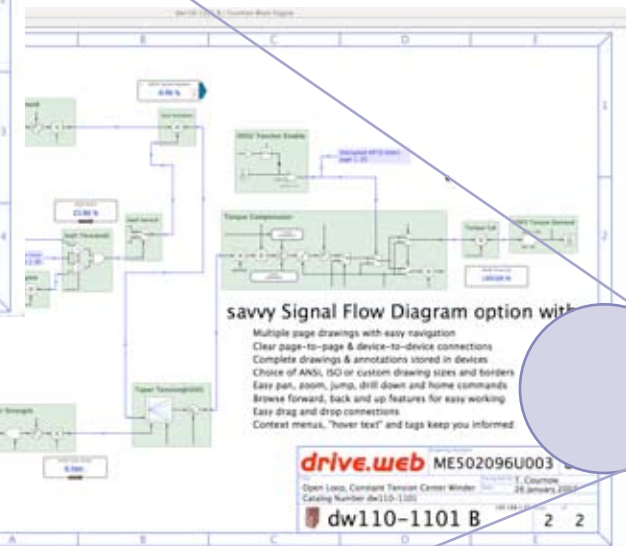
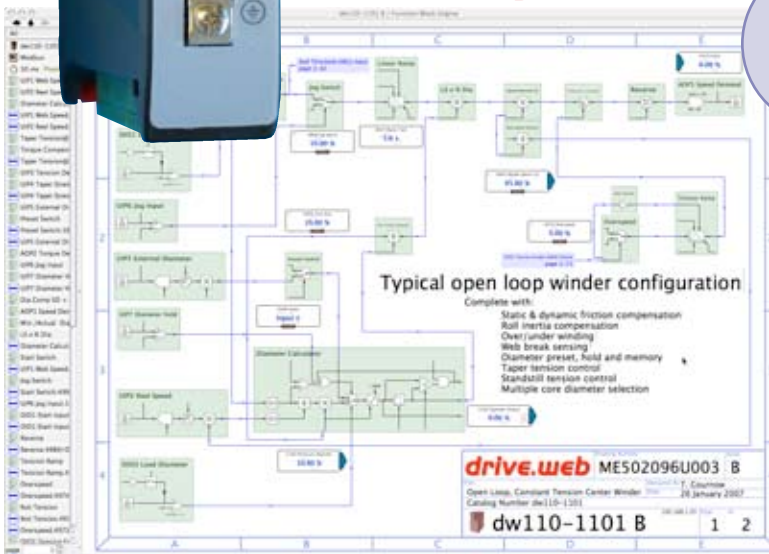
Open Loop Constant Tension Center Winder

Closed Loop Dancer Controlled Center Winder

Closed Loop Load Cell Controlled Center Winder

Closed Loop Slip Core Winder

To learn more about the *drive.web* control technology concepts download the FREE *drive.web savvy* configuration tools from www.driveweb.com and follow the getting started guides in the Help menu or join one of our weekly free online training seminars - it's easy!



These generic configurations can easily be edited by the intuitive *drive.web savvy* graphical tools to suit the particular application. The clear signal flow diagrams are stored in the controllers for reliable access in the field.

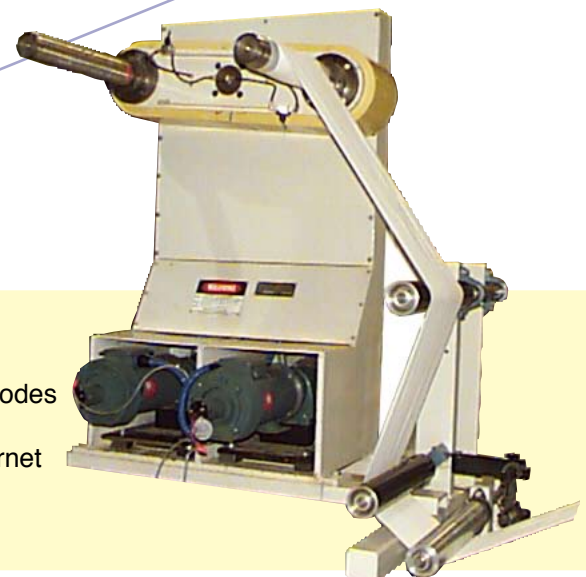
The basic *smarty* packages include 16 flexible analog/logic i/o in a small DIN rail mounting, Internet accessible unit (4.1" high, 4.8" deep, 0.9" wide) with 10/100baseTX Ethernet and plug-in terminals.

Standard features include:

- Fully editable configurations and drawings
- Process control and winder function block libraries
- Web break sensing
- Diameter memory, preset and hold
- Linear or hyperbolic taper tension
- Multiple core presets
- Integral reset
- Adaptive control for high speed systems
- Standstill tension mode
- Jog/run/slack take up modes
- Turret indexing mode
- Anti-reverse clamps
- Core speed matching

Optional features include:

- Over/under winding
- Line drive coordination
- Manual or auto-splicing modes
- Encoder inputs
- ModbusTCP/IP over Ethernet
- Serial communications
- ... and more.



drive.web

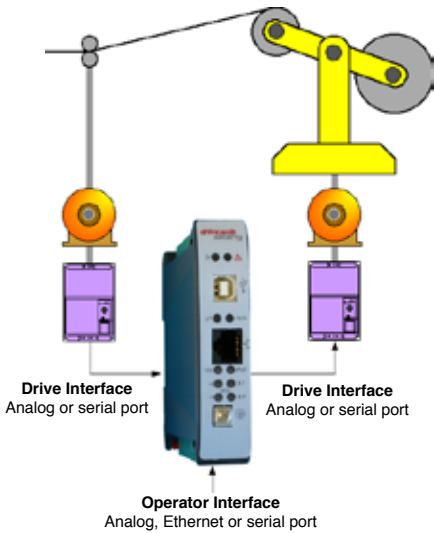
WEB HANDLING EXCELLENCE

dw210-1101

smarty special

OPEN LOOP CONSTANT TENSION CENTER WINDER

Special features include ...
Static and dynamic friction compensation
Inertia compensation
Diameter calculation
Torque compensation
Torque demand range limits



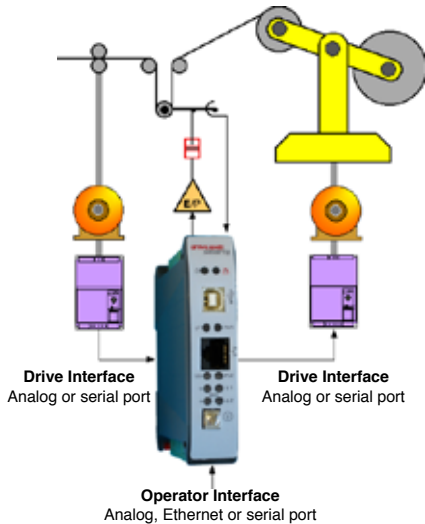
smarty specials are very easy to interface to most line and winder drives, operator stations and PLCs over Ethernet, RS485 serial communications or via analog and logic wired connections

dw210-1102

smarty special

CLOSED LOOP DANCER CONTROLLED CENTER WINDER

Special features include ...
Output for e/p (electrical-to-pressure) air valve control
Diameter calculation or sensor input
Optional loadcell input
Dancer limit inputs
Winder speed range limits



Try it out!

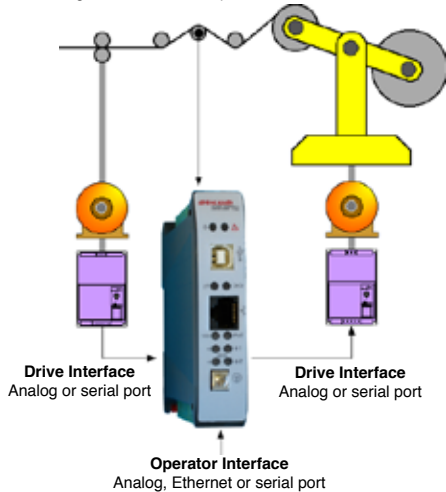
Download the **savvy** programming tools free from www.driveweb.com and edit the demo "phantom" controllers or create your own "phantoms"

dw210-1103

smarty special

CLOSED LOOP LOADCELL CONTROLLED CENTER WINDER

Special features include ...
Loadcell input
Diameter calculation or sensor input
Winder speed range limits
Loadcell high/low tension alarm outputs



smarty specials options:

- ModbusTCP/IP slave over Ethernet
- ModbusRTU master or slave RS485 ports
- Single or dual encoder inputs with retransmit
- Math function block library (trig, exponential, log)
- Encoder control function block library

Other **smarty specials** include:

- dw210-1105, Electronic Line Shaft
- dw210-1106, Coordinated Drive Line Master
- dw210-1107, Generic interface for analog drives

drive.web control technologies

www.driveweb.com

40 Log Canoe Circle, Stevensville, MD 21666 USA

Phone + 410-604-3400 Toll Free USA 1-888-667-7333 (1-888-ON SPEED)